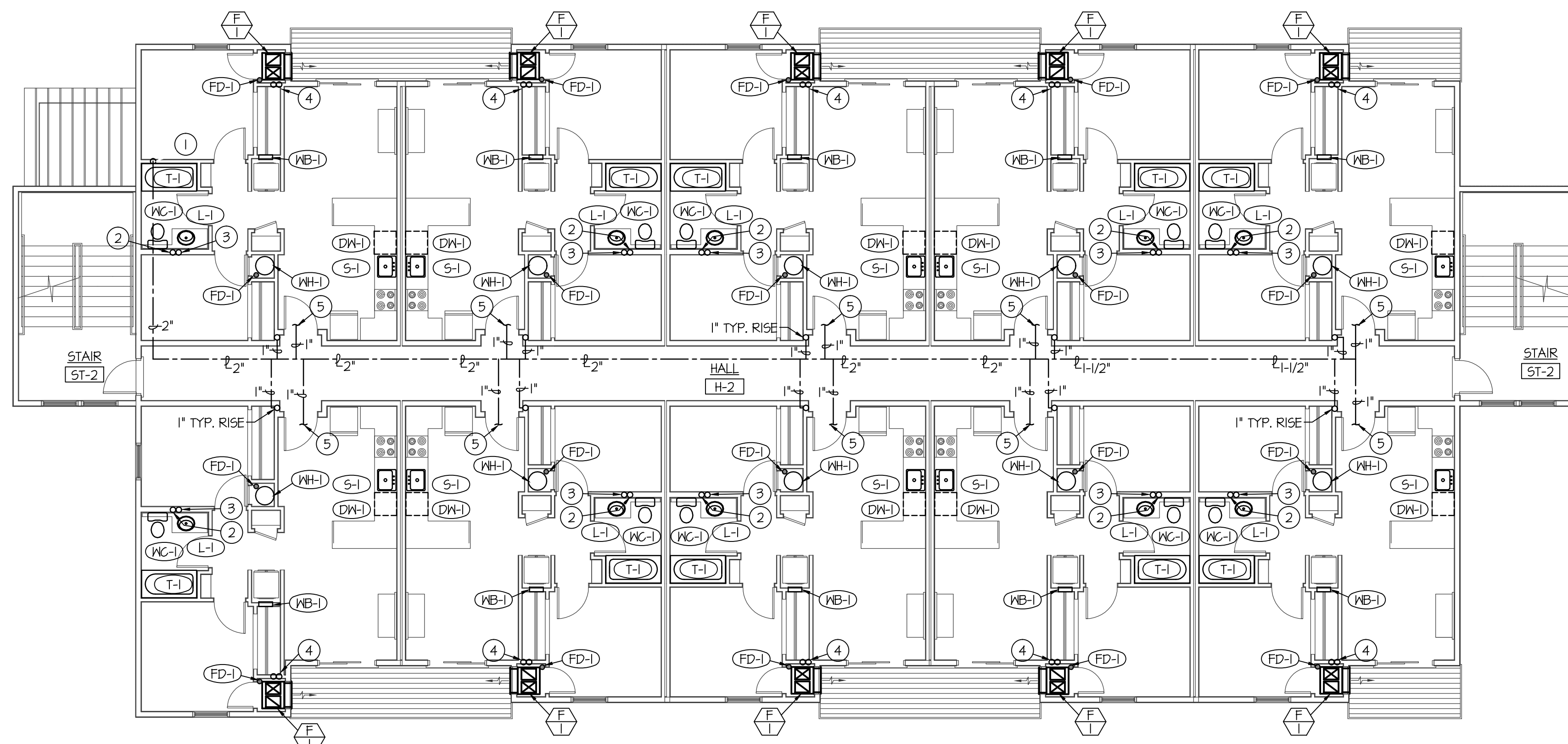
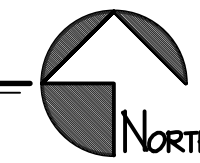


F:\N17042 JUNIPER SANDS APTS\N17042 P1.2.dwg Jun 15, 2017 - 3:23pm



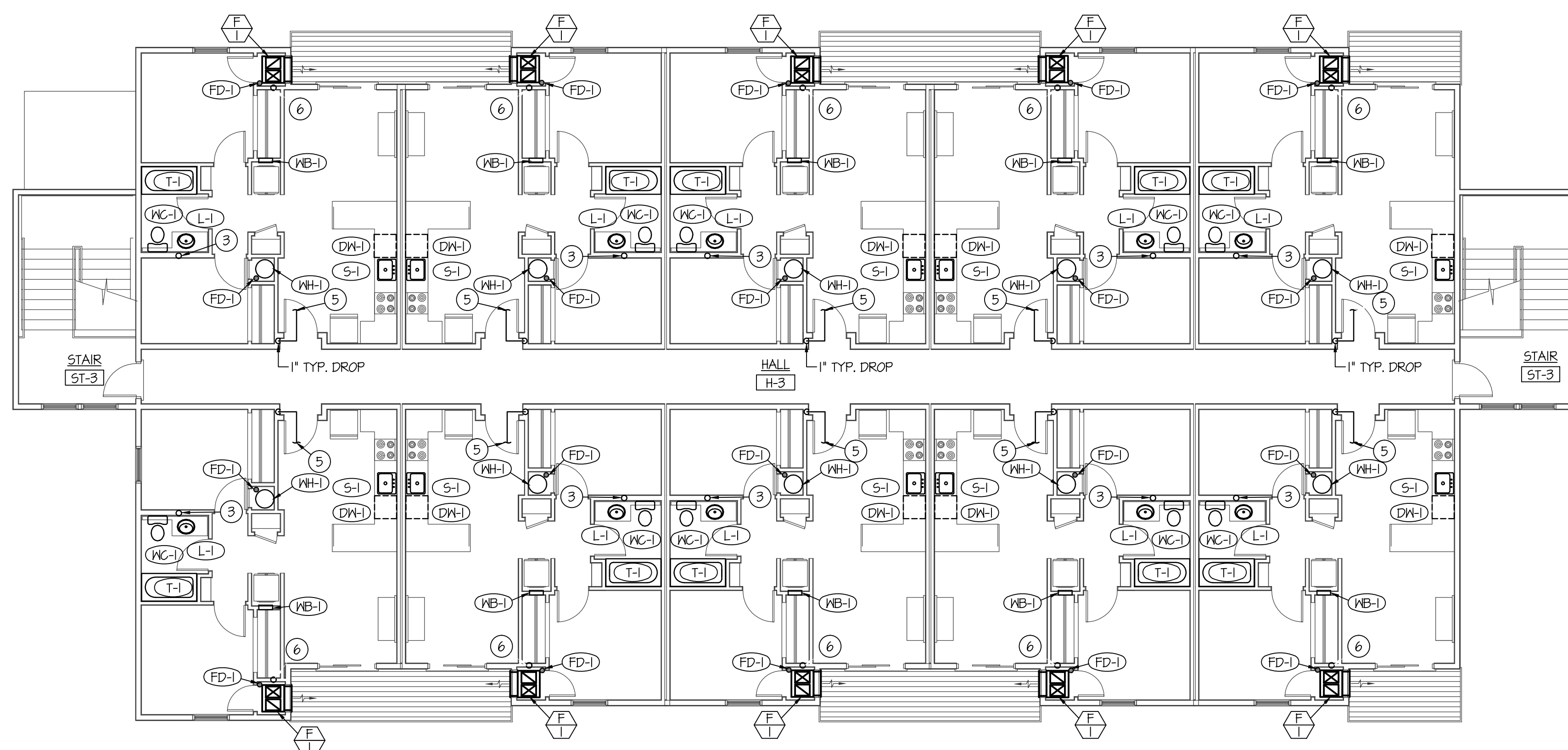
BLDG. 1 - 2ND FLOOR PLUMBING PLAN

SCALE: 1/8" = 1'-0"



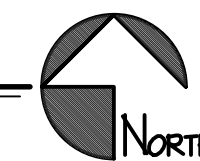
NOTE:

SEE TYPICAL APT. LARGE SCALE PLUMBING FLOOR PLANS ON SHEET P2.0 FOR PIPING AND EQUIPMENT LOCATED IN EACH APT.



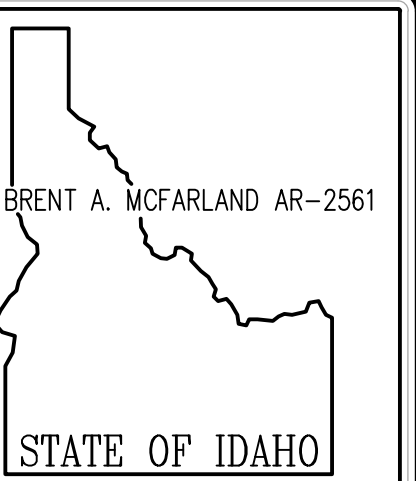
BLDG. 1 - 3RD FLOOR PLUMBING PLAN

SCALE: 1/8" = 1'-0"

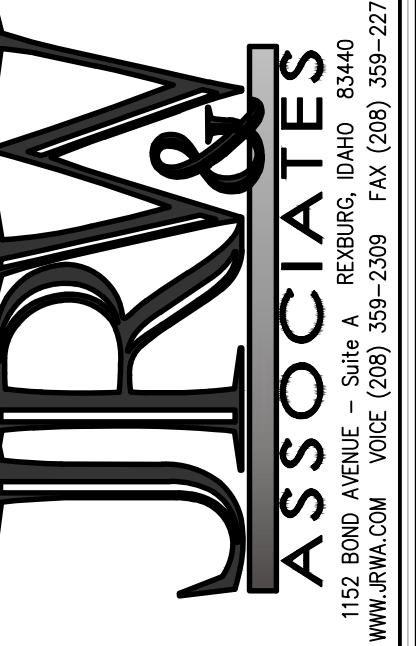


PLAN NOTES:

- 1 2" CW UP IN WALL FROM BELOW TO SERVE 2ND AND 3RD LEVEL APTS. ABOVE. SEE SHEET P1.1 FOR CONTINUATION OF PIPING.
- 2 4" WASTE STACK UP IN WALL TO 3RD LEVEL FLOOR ASSEMBLY.
- 3 4" VENT STACK UP IN WALL TO 4" VTR ON ROOF.
- 4 (2) 3/4" GAS LINES UP IN WALL FROM BELOW TO SERVE 2ND AND 3RD LEVEL FURNACES. SEE SHEET P1.1 FOR CONTINUATION OF GAS LINES BELOW. SEE LARGE SCALE PLUMBING PLANS ON SHEET P2.0 FOR CONNECTION TO FURNACES AND SHUT-OFF VALVES.
- 5 SEE TYPICAL LARGE SCALE APT. PLUMBING PLANS ON SHEET P2.0 FOR CONTINUATION OF 1" WATER PIPING SERVING INDIVIDUAL APARTMENTS.
- 6 (1) 3/4" GAS LINE UP FROM BELOW TO SERVE FURNACE ON 3RD LEVEL. SEE SHEET P1.1 FOR CONTINUATION OF GAS LINES BELOW. SEE LARGE SCALE PLUMBING PLANS ON SHEET P2.0 FOR CONNECTION TO FURNACES AND SHUT-OFF VALVES.



BRENT A. MCFARLAND AR-2561
STATE OF IDAHO



1152 BOND AVENUE SUITE A REBERG, IDAHO 83440
WWW.JRW.COM VOICE (208) 359-2009 FAX (208) 359-2271

CONSULTANTS:

PROJECT: JUNIPER SANDS APARTMENTS IDAHO
REBERG, IDAHO
DRAWING TITLE: BLDG. 1 - 2ND & 3RD LEVEL PLUMBING PLANS

#	DATE	COMMENT

DRAWN BY: SR	JOB NO: 694
CHECKED BY: DCS	DATE: JUNE 2017

PLOT DATE:
DRAWING NO. 17042 P1.2.dwg
P1.2
OF -

ORIGINAL DRAWING SIGNED BY: DWAYNE C. SUDWEEKS
DATE ORIGINAL SIGNED: Jun 15, 2017
ORIGINAL ON FILE AT ENGINEERED SYSTEMS ASSOCIATES
1355 EAST CENTER, POCATELLO, IDAHO 83201

PROFESSIONAL ENGINEER
REGISTERED
5762
STATE OF IDAHO
DWAYNE C. SUDWEEKS

Engineered Systems Associates
1355 EAST CENTER
POCATELLO, IDAHO 83201
PHONE: (208) 233-0501
FAX: (208) 233-0529
EMAIL: eso@engsystems.com
ESA JOB NUMBER: 17042